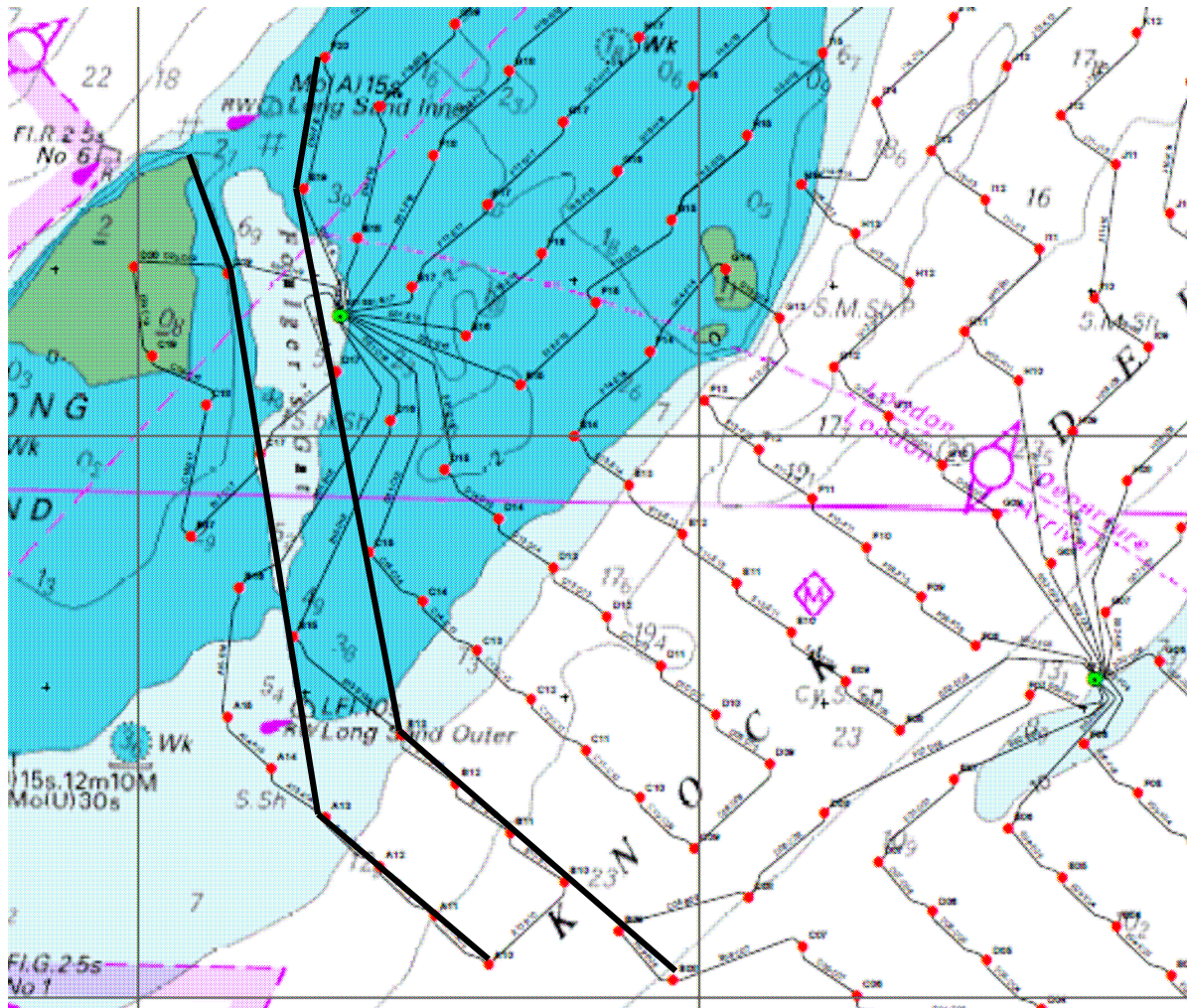


London Array wind farm construction and Foulger's Gat – guidance to yachtsmen

Construction of the first phase of the London Array OWF is scheduled to start in February 2011 and run through until August or September 2011. During that period access across the Long Sand through Foulger's Gat will be severely restricted by the rolling 500-metre exclusion zone around the construction vessels and works. Construction will start at the South Western end of the site and move steadily North East. As can be seen from the chartlet below there is to be a substation SS1 on the North East side of the Gat with extensive inter-generator and export cabling, the installation of which will take a significant time.



Recreational sailors are advised to avoid Foulger's Gat and the construction site and to cross the Long Sand using the Northern Buffer Zone through Fisherman's Gat keeping outside the buoyed channel. Fisherman's Gat is designated a Precautionary Area by the Port of London Authority (PLA) so recreational vessels are required to maintain a high level of look out so as not to impede commercial shipping.

Once this phase of construction work is complete and the work has moved away to the North East, we expect to be able to use Foulger's Gat again, albeit with some interruptions and a need to keep a careful eye on construction vessels. The expected final line of the corridor is shown in the chartlet by the solid black lines on either side of the charted Gat. Trinity House will adjust the positions of the Long Sand Inner and Long Sand Outer buoys in due course and there will probably be another buoy to mark the South Easterly dogleg.

Re-issued by RYA East, 31st March 2011