

**Distribution List:**

UKHO	hdcfiles@ukho.gov.uk
Trinity House	Navigation.Directorate@thls.org
Skegness Lifeboat Station	Skegness@rnli.org.uk
Kings Lynn Port Authority	harbourmaster@portauthoritykingslynn.fsnet.co.uk
Port of Boston	rwalker@portofboston.co.uk
Kingfisher Information Services	kingfisher@seafish.co.uk
Port of Wisbech	cdorrington@fenland.gov.uk
EIFCA	mail@eastern-ifca.gov.uk
Danbrit (Ian Coates)	icoates@dsm1.co.uk
Danbrit (Simon Prince)	sprince@dsm1.co.uk
Humber Maritime Rescue Sub-Centre	wm.humber@mcga.gov.uk
Yarmouth Coastguard	Wm.yarmouth@mcga.gov.uk
Marine Coastguard Agency	paul.townsend@mcga.gov.uk
Boston Boat Angling Club	royleianlincs@yahoo.co.uk
Radio Navigation Warnings (UKHO)	nawarnings@btconnect.com
CREL Marine Coordinator	LIDMarine.Coordinator@centrica.com
RYA East (Gerry Askham)	gerry@hurst-marine.co.uk
RYA East (John Dinwiddy)	john.dinwiddy@googlemail.com
RYA East (Chris Edwards)	erecrya@talktalk.net

December 2011

**INNER DOWSING OFFSHORE WIND FARM - Notice to Mariners**

Mariners are advised that maintenance work is continuing within the **Inner Dowsing Offshore Wind Farm** site. This Notice to Mariners details the location of the new Exclusion Zones, and also details which of the Exclusion Zones previously notified in relation to these works have been removed. This notification replaces the equivalent maintenance notification issued in August 2011 for the period from 3 September 2011.

**Activity: Wind Turbine Maintenance Works**

**Planned start date:** 17 December 2011  
**Approximate end date:** 17 February 2012

**Vessel Name:** *MS Wind*  
 55 m length  
 18 m beam



**Nature of operations:**

Maintenance work will be taking place at a number of wind turbine locations within the Inner Dowsing Wind Farm site. These works will be carried out via the jack-up vessel *MS Wind*.

**Coordinates of operations:**

Within the Inner Dowsing Offshore Wind Farm, see figure overleaf, which also details the coordinates for the relevant wind turbines undergoing maintenance (turbines ID02, ID06, ID07, ID08, ID09, ID10, ID15, ID16, ID17 and ID20).

**THE INNER DOWSING OFFSHORE WIND FARM ORDER 2003. SI NO. 2831**

**CONSTRUCTION EXCLUSION ZONE**

Notice is hereby given by Centrica Renewable Energy Limited (CREL) on behalf of Inner Dowsing Wind Farm Ltd that a construction exclusion zone shall come into effect on 17 December 2011 under the provisions of the above Order, in respect of the proposed maintenance works within the Inner Dowsing site.

Any person who, without reasonable excuse during the proposed works at the Inner Dowsing offshore wind farm navigates a vessel within an area extending 500 m from any part of that work shall be guilty of an offence and shall be liable on summary conviction to a fine not exceeding level 3 on the standard scale.

The construction exclusion zone is defined as the 500 m radius zone around the works. Taking into account the turbine location and length of the jack-up vessel (55 m), the exclusion zones are therefore defined as 555 m around each of the relevant wind turbines, being the area shaded in red on the figure overleaf.

Please note that work will not be carried out at all of these locations at the same time. It is a requirement of the above named Order, under which the wind farm is consented, that these exclusion zones are notified in advance in this way. However, please be aware that, with only one maintenance vessel operating in the area at any one time, **mariners are only requested to observe those exclusion zones where a jack-up vessel is present.**

If fishermen require an update during these works they should contact our fisheries liaison officers, whose contact details are provided below.

With immediate effect Centrica Renewable Energy Ltd on behalf of Inner Dowsing Wind Farm Ltd has removed the exclusion zones put into effect on 03 September 2011 under the provisions of the Inner Dowsing Offshore Wind Farm Order 2003 (Statutory Instrument No. 2831) in respect of wind turbines ID01, ID03, ID04, ID05, ID11, ID12, ID13 and ID14.

The construction exclusion zone shall not apply to a person navigating a vessel for the purpose of, or in connection with, the proposed maintenance works. The construction exclusion zones detailed in this notice shall terminate on completion of the works, such date to be communicated by a Notice to Mariners. Provisional date of completion: 17 February 2012.

**For the avoidance of doubt, the Lynn Offshore Wind Farm Construction Exclusion Zone remains in place.**

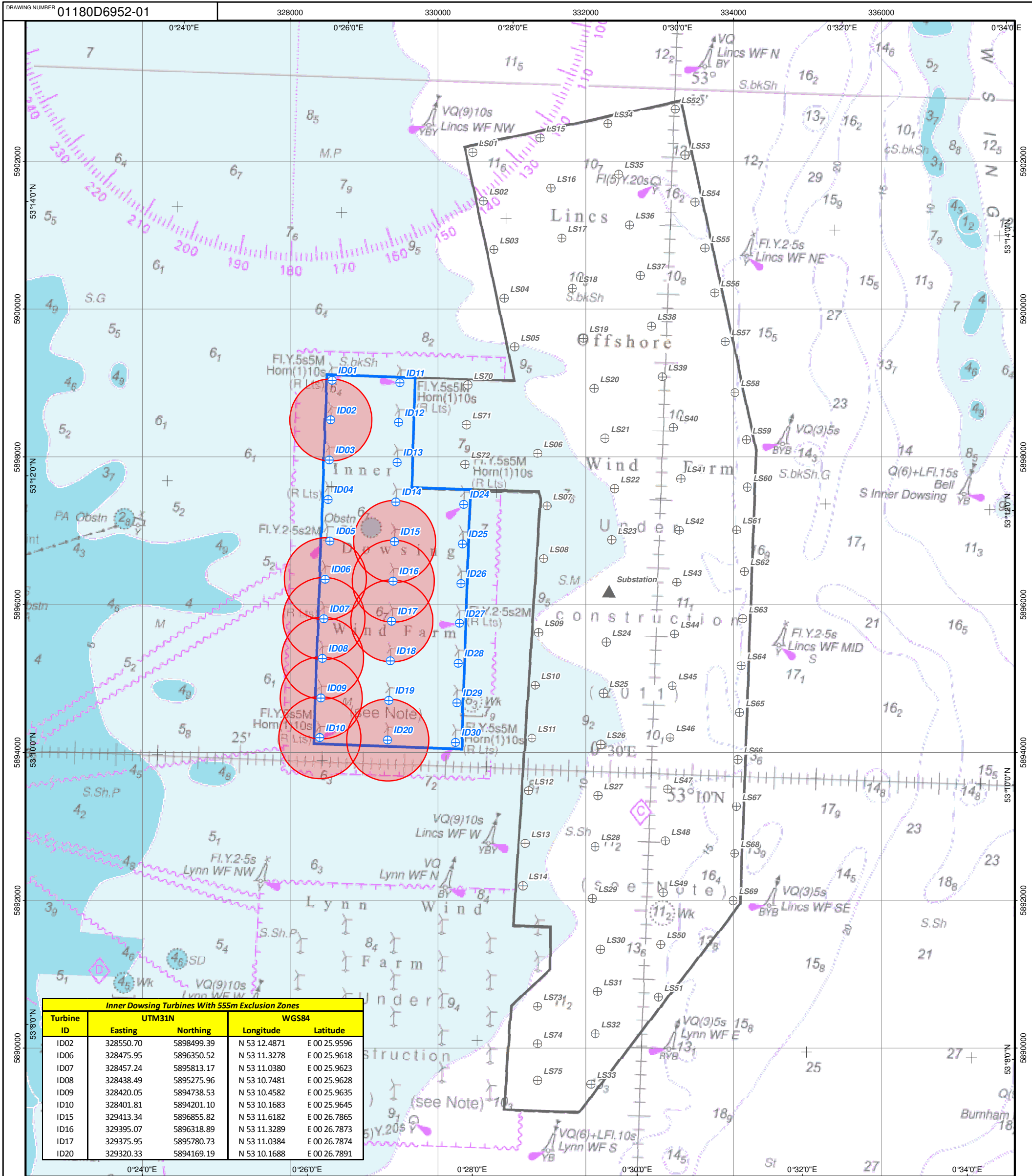
**Contact details:**

Contact details for onshore Fisheries Liaison Officer (FLO):

Simon Prince: 07920 273866, sprince@dsml.co.uk

Simon Calden: 07825 382896, scalden@dsml.co.uk

Enquiries regarding this notice should be directed to **Renewables@Centrica.com**



Inner Dowsing Turbines With 555m Exclusion Zones				
Turbine ID	UTM31N		WGS84	
	Easting	Northing	Longitude	Latitude
ID02	328550.70	5898499.39	N 53 12.4871	E 00 25.9596
ID06	328475.95	5896350.52	N 53 11.3278	E 00 25.9618
ID07	328457.24	5895813.17	N 53 11.0380	E 00 25.9623
ID08	328438.49	5895275.96	N 53 10.7481	E 00 25.9628
ID09	328420.05	5894738.53	N 53 10.4582	E 00 25.9635
ID10	328401.81	5894201.10	N 53 10.1683	E 00 25.9645
ID15	329413.34	5896855.82	N 53 11.6182	E 00 26.7865
ID16	329395.07	5896318.89	N 53 11.3289	E 00 26.7873
ID17	329375.95	5895780.73	N 53 11.0384	E 00 26.7874
ID20	329320.33	5894169.19	N 53 10.1688	E 00 26.7891

NOT TO BE USED FOR NAVIGATION

**555m Turbine Exclusion Zones**  
Exclusion Zone (500m exclusion zone is required from any part of the LID works, which has been taken to include the 55m length of jack-up vessel)

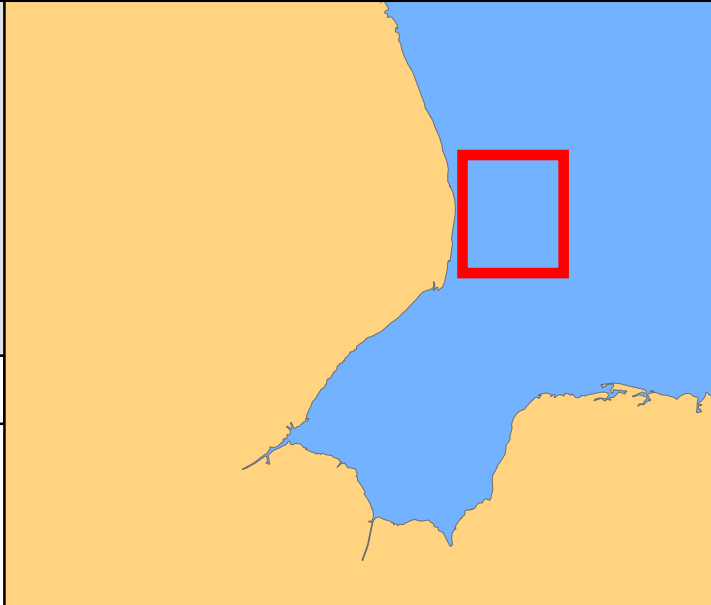
**Inner Dowsing OWF**

- ID Turbine Positions
- LD-O-OM-016-0106-300002-111-D
- ID OWF Boundary
- The Crown Estate Lease

**Lincs OWF**

- Lincs Turbine Positions
- LD-O-OM-016-0106-300002-111-D
- Lincs OWF Boundary
- Lincs Turbines Provided For Reference Only. For Lincs Safety Zones, Centrica Document LN-E-EN-001-0106-000000-027

GRID NORTH



01	AM	23-11-11	EF	07-12-11	First Issue
ISSUE	DRAWN	DATE	APPD	DATE	REVISION NOTES
LAYOUT DWG	01180D0013-03	LAYOUT NO.	POFFDow91/92	PURPOSE	OTHER
	01515D0001-06		POFFin095		
DRAWING NUMBER 01180D6952-01					
HORIZONTAL DATUM WGS84			PROJECTION & GRID UTM 31N		
SCALE 1:50,000			ORIGINAL PLOT SIZE A3		
PROJECT TITLE INNER DOWSING OFFSHORE WIND FARM					
DRAWING TITLE Notice To Mariners – Inner Dowsing – Turbine Exclusion Zones					
© British Crown SeaZone Solutions Limited. All Rights Reserved. Products Licence No. 022011.004. This product has been derived, in part, from material obtained from the UK Hydrographic Office with the permission of the Controller of Her Majesty's Stationary Office and UK Hydrographic Office. ©GB Outline ESRI2000. This drawing was compiled using the most current data at the time of publication. Please contact CREL for the latest information (Renewables@Centrica.com)					
THIS DRAWING IS THE PROPERTY OF CENTRICA RENEWABLE ENERGY LTD (CREL) AND NO REPRODUCTION MAY BE MADE IN WHOLE OR IN PART WITHOUT PERMISSION					

CENTRICA DOCUMENT NUMBER LD-O-OM-013-0106-300002-113-D

THIS DRAWING WAS PRODUCED BY:  
RENEWABLE ENERGY SYSTEMS LTD

FARADAY HOUSE,  
STATION ROAD  
KINGS LANGLEY  
HERTFORDSHIRE  
WD4 8LH

TEL +44 (0) 1923 299200  
FAX +44 (0) 1923 299299