

## Distribution List:

UKHO	hdfiles@ukho.gov.uk
Trinity House	Navigation.Director@thls.org
Skegness Lifeboat Station	Skegness@rnli.org.uk
Kings Lynn Port Authority	harbourmaster@portauthoritykingslynn.fsnet.co.uk
Port of Boston	rwalker@portofboston.co.uk
Kingfisher Information Services	kingfisher@seafish.co.uk
Port of Wisbech	cdorrington@fenland.gov.uk
Eastern Sea Fisheries Committee	mail@esfjc.co.uk
Danbrit (Ian Coates)	icoates@dsmi.co.uk
Danbrit (Simon Prince)	sprince@dsmi.co.uk
Humber Maritime Rescue Sub-Centre	wm.humber@mcga.gov.uk
Yarmouth Coastguard	Wm.yarmouth@mcga.gov.uk
Marine Coastguard Agency	paul.townsend@mcga.gov.uk
Boston Boat Angling Club	royleianlincs@yahoo.co.uk
Radio Navigation Warnings (UKHO)	navwarnings@btconnect.com
CREL Marine Coordinator	LID.Marine.Coordinator@centrica.com
RYA East	gerry@hurst-marine.co.uk
RYA East	john.dinwiddy@googlemail.com
RYA East	erecya@talktalk.net

# centrica energy

**Centrica Renewable Energy Limited**  
Millstream  
Maidenhead Road  
Windsor  
Berkshire SL4 5GD

Telephone +44 (0) 1753 431000  
Facsimile +44 (0) 1753 491387  
[www.centrica.com/renewables](http://www.centrica.com/renewables)

12 July 2010

## Lynn and Inner Dowsing OFFSHORE WIND FARMS - Notice to Mariners

Mariners are advised of planned geophysical surveys at Lynn and Inner Dowsing Offshore Wind Farms

### **Activity: Geophysical Survey**

**Planned start date:** 20 July 2010  
**Approximate end date:** 15 Sept 2010

**Vessel Names:** **FPV Morven**  
20.0m length,  
5.5m beam

**Wessex Explorer**  
15.2m length,  
4.6m beam

### **Nature of operations:**

Geophysical Surveys (multi-beam and side-scan sonar) with towed streamers, therefore please maintain a 250m safe distance.

### **Coordinates of operations:**

Within the boundaries and the area between the Lynn and Inner Dowsing Offshore Wind Farms and along export cable routes – see WGS84 coordinates below and figure overleaf.



ID	Latitude	Longitude
1	53° 12.819' N	0° 25.888' E
2	53° 12.819' N	0° 26.967' E
3	53° 12.016' N	0° 26.969' E
4	53° 12.017' N	0° 28.513' E
5	53° 11.962' N	0° 28.536' E
6	53° 8.851' N	0° 28.389' E
7	53° 8.851' N	0° 28.839' E
8	53° 8.541' N	0° 28.858' E
9	53° 8.267' N	0° 28.399' E
10	53° 7.504' N	0° 28.355' E
11	53° 7.505' N	0° 25.670' E
12	53° 7.807' N	0° 25.687' E
13	53° 9.156' N	0° 22.137' E

14	53° 9.288' N	0° 22.129' E
15	53° 7.931' N	0° 25.694' E
16	53° 8.785' N	0° 25.742' E
17	53° 9.356' N	0° 22.125' E
18	53° 9.504' N	0° 22.116' E
19	53° 8.991' N	0° 25.767' E
20	53° 10.102' N	0° 25.884' E
21	53° 9.658' N	0° 22.107' E
22	53° 9.767' N	0° 22.100' E
23	53° 10.214' N	0° 25.893' E
24	53° 11.357' N	0° 25.891' E
25	53° 9.850' N	0° 22.095' E
26	53° 10.066' N	0° 22.082' E
27	53° 11.675' N	0° 25.890' E

### Lynn Offshore Wind Farm exclusion zone remains in place

The **Lynn Offshore Wind Farm** construction exclusion zone under the provisions of the Transport and Works Act (Statutory Instrument No. 2829) remains in place until further notice and an update will be given in a Notice to Mariners in the near future. The exclusion zone in which navigation remains excluded within the Lynn Offshore Wind Farm project is defined by the following area marked by special mark and cardinal buoys:

#### Lynn

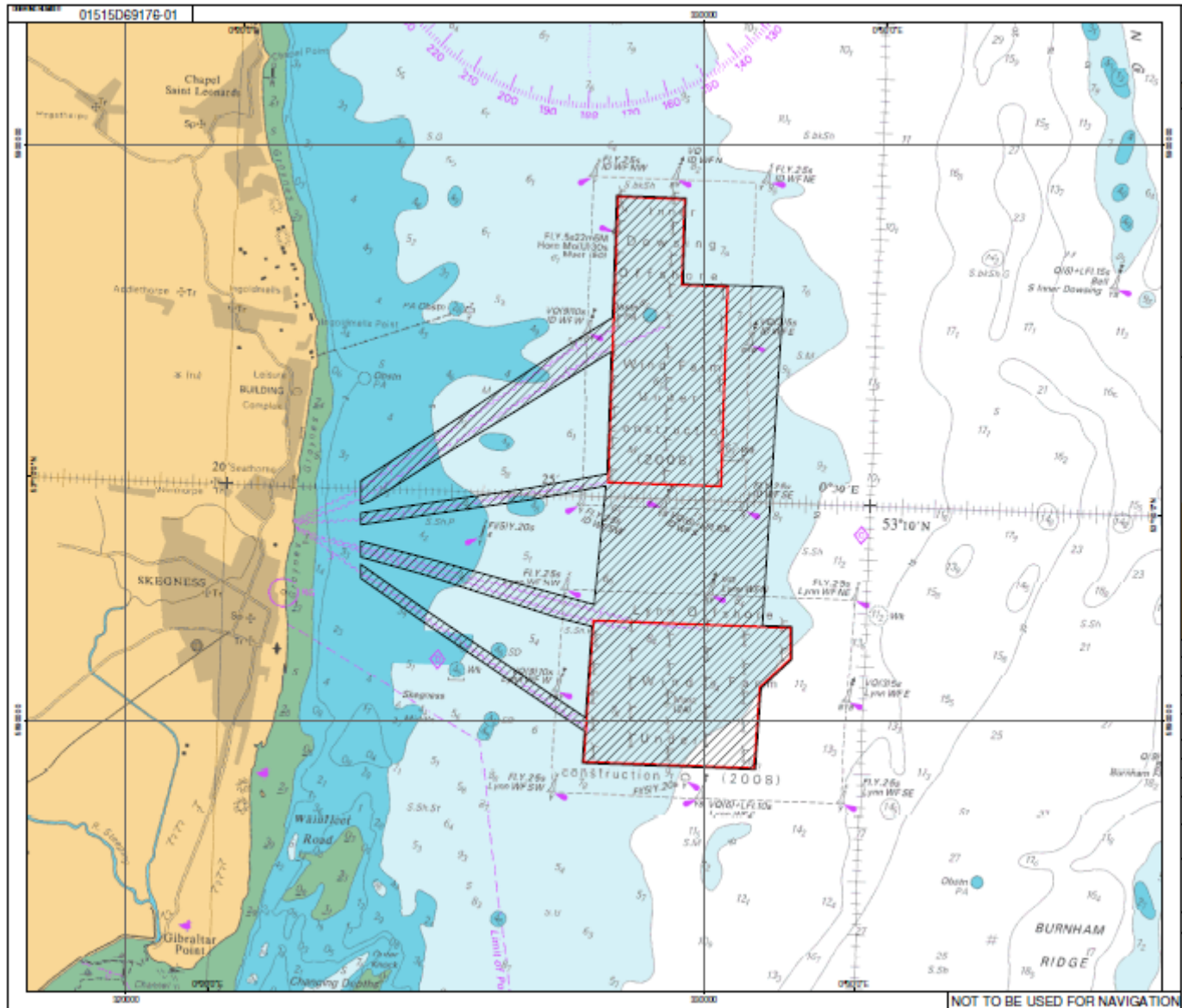
NW	Special Mark Lighted Buoy	53° 9' 7 "N	0° 25 19 "E
NE	Special Mark Lighted Buoy	53° 9' 7 "N	0° 29 48 "E
SE	Special Mark Lighted Buoy	53° 7' 14 "N	0° 29 41 "E
SW	Special Mark Lighted Buoy	53° 7' 14 "N	0° 25 12 "E
E	East Cardinal Lighted Buoy	53° 8' 10 "N	0° 29 45 "E
W	West Cardinal Lighted Buoy	53° 8' 10 "N	0° 25 15 "E
N	North Cardinal Lighted Buoy	53° 9' 7 "N	0° 27 33 "E
S	South Cardinal Lighted Buoy	53° 7' 14 "N	0° 27 30 "E

Any person who, without reasonable excuse navigates a vessel within an area extending 500 metres from any part of the Lynn wind farm shall be guilty of an offence. This exclusion zone for the Lynn Offshore Wind Farm project shall not apply to a person navigating a vessel for the purpose of, or in connection with, the construction, maintenance or operation of the authorised works.

A Fisheries Liaison Officer (FLO) will be aboard the survey vessel for the duration of the proposed works (Mob: 07940252445). Enquiries regarding this notice should be directed to **Renewables@Centrica.com**

Fishermen that operate within the proposed survey boundary should contact the FLO in the first instance to discuss any potential interactions between their activities and the planned survey.

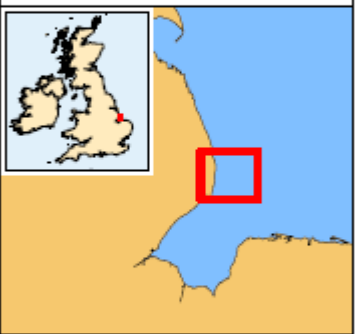
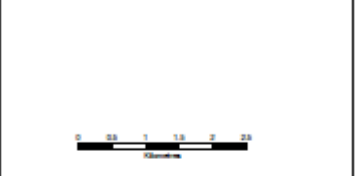
**Chris Jenner**  
**Consents & Environmental Manager**  
 For and on behalf of Lynn and Inner Dowsing Project



01515D69176-01  
LN-E-EN-013-0000-000000-001

**Legend**

- Lymn and Inner Dowling Offshore Wind Farm Boundaries
- LID Post Construction Survey Area



DT	WT	DATE	BY	DATE	FILE NAME
ISSUE	DRAWN	DATE	APPRO	DATE	REVISION NUMBER
LAYOUT DATE	NA	LAYOUT NO.	NA		
DRAWING NUMBER	01515D69176-01				
PROJECTION DATUM	WGS84	PROJECTION A GRID	UTM 31N		
PURPOSE	OTHER				
SCALE	1:55,000	ORIGINAL PLOT SIZE	A3		
PROJECT TITLE	LINCS OFFSHORE WIND FARM				
DRAWING TITLE	Lincs Preconstruction Survey Extant (LID)				
<small>© Crown Copyright and Database Right (2008). Produced by Ordnance Survey. This product has been derived, in part, from material obtained from the UK Hydrographic Office with the permission of the Controller of the Admiralty Ensign and UK Hydrographic Office. © Crown Copyright 2008.</small>					
<small>THIS DRAWING IS THE PROPERTY OF CENTRICA RENEWABLE ENERGY LTD AND NO REPRODUCTION MAY BE MADE IN WHOLE OR IN PART WITHOUT PERMISSION.</small>					
<small>THIS DRAWING WAS PRODUCED BY: RENEWABLE ENERGY SYSTEMS LIMITED WALLFORD COLLEGE, SOUTHAM, RGS, KINGS LANGLEY, HERTS SG9 6BL TEL: +44 (0) 1825 286200 M/F: +44 (0) 1825 286200</small>					

NOT TO BE USED FOR NAVIGATION