

Distribution List:

UKHO	hdcfiles@ukho.gov.uk
Trinity House	Navigation.Directorate@thls.org
Skegness Lifeboat Station	Skegness@rnli.org.uk
Kings Lynn Port Authority	harbourmaster@portauthoritykingslynn.fsnet.co.uk
Port of Boston	rwalker@portofboston.co.uk
Kingfisher Information Services	kingfisher@seafish.co.uk
Port of Wisbech	cdorrington@fenland.gov.uk
EIFCA	mail@eastern-ifca.gov.uk
Danbrit (Ian Coates)	icoates@dsmi.co.uk
Danbrit (Simon Prince)	sprince@dsmi.co.uk
Humber Maritime Rescue Sub-Centre	wm.humber@mcga.gov.uk
Yarmouth Coastguard	Wm.yarmouth@mcga.gov.uk
Marine Coastguard Agency	paul.townsend@mcga.gov.uk
Boston Boat Angling Club	royleianlincs@yahoo.co.uk
Radio Navigation Warnings (UKHO)	nawarnings@btconnect.com
CREL Marine Coordinator	LIDMarine.Coordinator@centrica.com
RYA East (Gerry Askham)	gerry@hurst-marine.co.uk
RYA East (John Dinwiddy)	john.dinwiddy@googlemail.com
RYA East (Chris Edwards)	erecrya@talktalk.net

December 2011

1. LYNN OFFSHORE WIND FARM - Notice to Mariners

Mariners are advised that cable burial work will be taking place within the **Lynn Offshore Wind Farm** site.

Activity: Cable Burial Works

Planned start date: Late December 2011
Approximate end date: To be advised; work will continue in January 2012 and an update will be issued in due course

Vessel Name: *MV NICO*
 38.8 m length
 9.4 m beam



Nature of operations:
 Cable burial work will be taking place within the Lynn Wind Farm site, which remains subject to an exclusion zone. The work will be carried out from a Remote Operated Vehicle (ROV).

Coordinates of operations:
 Within the Lynn Offshore Wind Farm, see figure overleaf. All works will take place within the existing Lynn Construction Exclusion Zone.

2. LYNN OFFSHORE WIND FARM - Notice to Mariners

Mariners are advised that the wind turbine maintenance works at the **Lynn Wind Farm** site will be continuing until 31 August 2012.

Activity: Maintenance Works

Planned start date: Ongoing
Approximate end date: 31 August 2012

Vessel Name: *MS Wind*
55 m length
18 m beam



Nature of operations:

Maintenance work is being carried out within the Lynn Offshore Wind Farm site at all turbine locations, via the jack-up vessel *MS Wind*.

Coordinates of operations:

Within Lynn Offshore Wind Farm, see figure overleaf.

LYNN OFFSHORE WIND FARM EXCLUSION ZONE REMAINS IN PLACE:

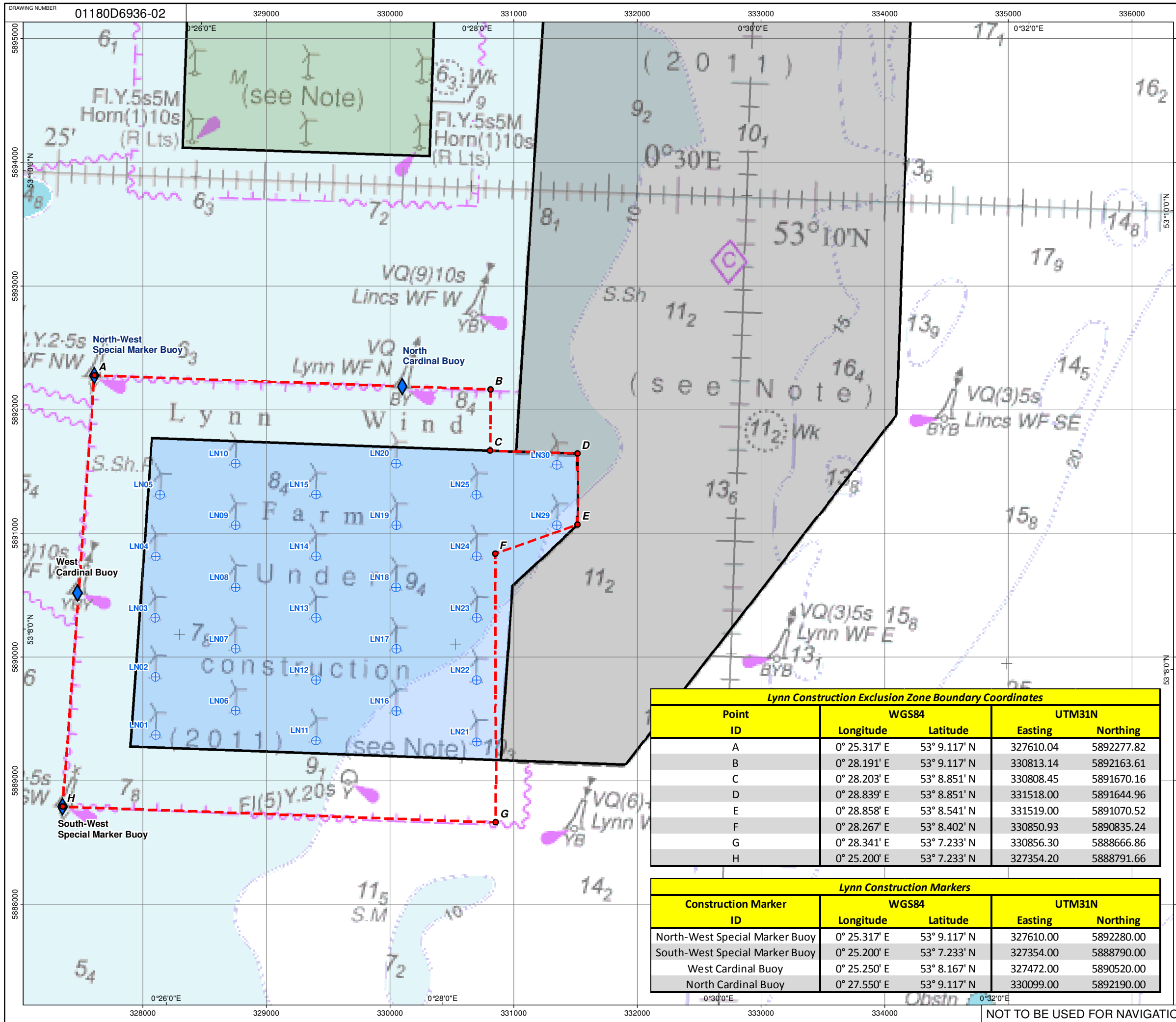
The Lynn Offshore Wind Farm construction exclusion zone under the provisions of the Transport and Works Act (Statutory Instrument No. 2829) remains in place. The exclusion zone in which navigation remains excluded within the Lynn Offshore Wind Farm site is defined by the area shown in red in the figure overleaf. The coordinates for the construction exclusion zone boundaries are also provided within the figure.

Any person who, without reasonable excuse navigates a vessel within an area extending 500 metres from any part of the Lynn wind farm shall be guilty of an offence. This exclusion zone for the Lynn Offshore Wind Farm project shall not apply to a person navigating a vessel for the purpose of, or in connection with, the construction, maintenance or operation of the authorised works.

CONTACT DETAILS:

Contact details for onshore Fisheries Liaison Officer (FLO):
Simon Prince: 07920 273866, sprince@dsml.co.uk
Simon Calden: 07825 382896, scalden@dsml.co.uk

Enquiries regarding this notice should be directed to **Renewables@Centrica.com**



CENTRICA DOCUMENT NUMBER
LD-O-OM-009-0036-300002-110-D

- Lynn Construction Markers**
- ◆ 1 North-West Special Buoy
 - ◆ 2 North Cardinal Buoy
 - ◆ 3 South-West Special Buoy
 - ◆ 4 West Cardinal Buoy

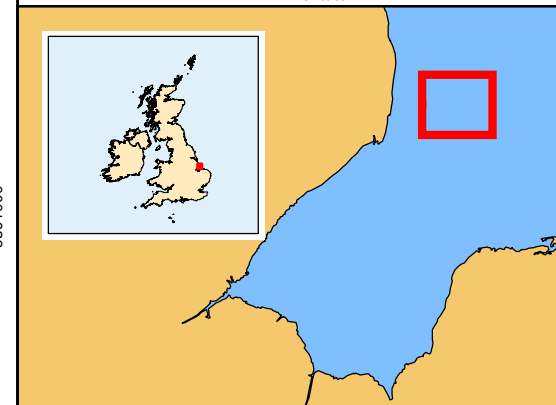
CREL Document Reference: LD-O-OM-009-0036-300002-110-D

⬡ Lynn Construction Exclusion Zone
CREL Document Reference: LD-O-OM-009-0036-300002-110-D

- ⊕ Round 1 OWF Turbines - Lynn
- ⬢ Round 1 - Lynn OWF - Consented Boundary
- ⬢ Round 1 - Inner Dowsing OWF - Consented Boundary
- ⬢ Round 2 - Lincs OWF - Consented Boundary

This map does not contain information for the Inner Dowsing or Lincs Offshore Wind Farm projects

Note Ref: Admiralty Chart
Depths are in metres and are reduced to Chart Datum, which is approximately the level of Lowest Astronomical Tide



02	AM	12-12-11	EF	13-12-11	General Amendments
01	AM	18-04-11	EF	12-05-11	First Issue
ISSUE	DRAWN	DATE	APPD	DATE	REVISION NOTES
LAYOUT DWG	01180D0013-03				POFFDow91/92
	01515D0001-06				POFFin095

DRAWING NUMBER
01180D6936-02

HORIZONTAL DATUM WGS84 PROJECTION & GRID UTM 31N

PURPOSE OTHER

SCALE 1:30,000 ORIGINAL PLOT SIZE A3

PROJECT TITLE
LYNN OFFSHORE WIND FARM

DRAWING TITLE
Lynn Construction Exclusion Zone

© British Crown SeaZone Solutions Limited. All Rights Reserved. Products Licence No. 092011.004. This product has been derived, in part, from material obtained from the UK Hydrographic Office with the permission of the Controller of Her Majesty's Stationary Office and UK Hydrographic Office. © GB Outline ESRI2000. This Map was compiled using the most current data at the time of publication. Please contact CREL for latest information (Lincs.DocumentControl@centrica.com)

THIS DRAWING IS THE PROPERTY OF CENTRICA RENEWABLE ENERGY LTD AND NO REPRODUCTION MAY BE MADE IN WHOLE OR IN PART WITHOUT PERMISSION

THIS DRAWING WAS PRODUCED BY
RENEWABLE ENERGY SYSTEMS LTD

FARADAY HOUSE,
STATION ROAD,
KINGS LANGLEY,
HERTFORDSHIRE,
WD4 8LH

TEL +44 (0) 1923 608200
FAX +44 (0) 1923 299299

Lynn Construction Exclusion Zone Boundary Coordinates

Point ID	WGS84		UTM31N	
	Longitude	Latitude	Easting	Northing
A	0° 25.317' E	53° 9.117' N	327610.04	5892277.82
B	0° 28.191' E	53° 9.117' N	330813.14	5892163.61
C	0° 28.203' E	53° 8.851' N	330808.45	5891670.16
D	0° 28.839' E	53° 8.851' N	331518.00	5891644.96
E	0° 28.858' E	53° 8.541' N	331519.00	5891070.52
F	0° 28.267' E	53° 8.402' N	330850.93	5890835.24
G	0° 28.341' E	53° 7.233' N	330856.30	5888666.86
H	0° 25.200' E	53° 7.233' N	327354.20	5888791.66

Lynn Construction Markers

Construction Marker ID	WGS84		UTM31N	
	Longitude	Latitude	Easting	Northing
North-West Special Marker Buoy	0° 25.317' E	53° 9.117' N	327610.00	5892280.00
South-West Special Marker Buoy	0° 25.200' E	53° 7.233' N	327354.00	5888790.00
West Cardinal Buoy	0° 25.250' E	53° 8.167' N	327472.00	5890520.00
North Cardinal Buoy	0° 27.550' E	53° 9.117' N	330099.00	5892190.00

NOT TO BE USED FOR NAVIGATION